

The Green Crab has no natural predators and is so invasive it has a negative impact on the native species around them. The Green Crab has been blamed for cutting down the soft shell clam population and is making food scarce for the sea birds above.

RESOURCES TO PREVENT THE SPREAD

Local Soil and Water Conservation District

Florence: (541) 997-1272

Eugene: (541) 684-0998

Siuslaw Watershed Council

(541) 268-3044

Oregoninvasivehotline.org

1-866-Invader

This small Green Crab has the ability to alter any ecosystem it in-

Time Period

First Observed In 1817 around the east coast of North America.

Western Australia (1965)

South Australia (1976)

California (1989)

Tasmania (1993)

Oregon (1997)

State of Washington (1998)



BIBLIOGRAPHY

<http://www.mbl.edu/marine.org/marine>

http://en.wikipedia.org/wiki/Carcinus_maenas

<http://www.issg.org/database/species/ecology.asp?si=114&fr=1&ct>

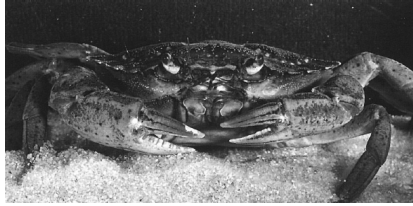


GREEN
GREEN
CRAB
CRAB

Carcinus Maenus

BY:
MICHELLE DECKER
2008
Mapleton High School

The Carcinus Maenus is a common crab in our area and are an non- native species. The Carcinus Maenus is native to Europe and northern Africa.



ECOLOGY

The Carcinus Maenus feeds plants, Insects, Oysters, Clams, Citons, Worms, Snails, Mussels, Urchins, other crabs, Fish and Sea stars. The Green Crab is no picky eater, it eats from 104 biological families, 5 plants, 14 animal phyla and 18 genera. When young, the Green Crab gets eaten by other native Crabs, Otters, Fish, Seals, The Great Blue Heron, Ducks and sometimes humans

Carcinus

Its close related species is called the Carcinus Aestuarii.

DESCRIPTION

The Color of the Carcinus Mae-nus varies from Green, Brown, Grey or Red. Depending on its environmental factors. Both sexes are a greenish color. Females are reddish orange on their bellies. Males and Juveniles have a yellowish underside. The Green Crabs carapace is up to 60 mm long and 90 mm wide. It has 5 antero-lateral teeth on each side of the carapace and 3 lobes between the eyes.



FACTS

- The Green Crab is listed among the “100 worlds most invasive alien species”.
- They can tolerate a wide range of salinities and temperatures.
- The Green Crab is an omnivore.
- Its common names are European shore crab, Green crab, and Standkrabbe.
- When a Green Crab molts it turns Red. When Green Crabs turn red they become more aggressive and stronger.
- Females can produce up to 185,000 eggs and can Reproduce twice in one season.